

## BUNDLED SET 12 IMAGES, 2017 CoR PLUS

This is the collection of artwork from 2017. It includes the Rhinos and Mechanical Rhinos from “A Crash of Rhinos,” Souvenirs & Memories, Mechanical Elephant and Punky Rooster KOCK.rocks.

### FEATURES

#### FULL PERMISSIONS

- Prim Canvas with menu for artwork selections
- Artwork images inside canvas
- Set of artwork images for Full Perm use.
- Certificate view with additional images and information

Copyable products can be redelivered. If you lose your items, both the SL Marketplace and CasperVend systems can redeliver your purchase.

Please do not resale these textures and patterns by themselves in Second Life. Do not sell them on other Vrs without permission. Do not use them in RL products. Contact me in SL for any other SL or RL use. In SL, they must be part of a build and not as Full Permissions. (Full Perm). Refer to the Second Life Terms of Service

<https://www.lindenlab.com/legal/second-life-terms-and-conditions>

## 12 Image Pack

1 Big Blue aka Puff, 2 Boss Hog aka Grumpy, 3 Mechanical Elephant, 4 Water Boy aka Puddles, 5 Shroomy aka Major Tripps, 6 Punky Rooster KOCK.rocks, 7 Souvenirs & Memories, 8 Scaler aka General Tuff, 9 Electric Wolf & Lava Rhino, 10 Titian Lion King, 11 Crimson Pyramid Rams, 12 Tyrian Raptor & Psychedelic Phoenix.  
2018, Artwork by AJ Leibengeist, <http://thunderchild.net>

**ORIGINAL ARTWORK TEXTURES**

**FULL PREM (MOD, COPY, TRANSF)**

### UNPACKING CASPERVEND

CasperVend items come in a box and will probably show up in your Objects Folder. You'll need to rez the box and open it to copy to your inventory.

### UNPACKING SL MARKETPLACE

Markerplace purchases most likely will not be boxed and can be viewed in the contents tab on the product page. Those items will go to your Received Items Folder in your Inventory.

### AVAILABILITY

This product is available in Second Life (SL) and Real Life (RL). RL products are provided by third-party on-demand companies including [RedBubble.com](http://RedBubble.com), [Society6.com](http://Society6.com), [Spoonflower.com](http://Spoonflower.com) and others

### INFORMATION

Full project and artwork information at <http://thunderchild.net>.

-----

### Artwork from “A Crash of Rhinos”

Water Boy aka Puddles, Scaler aka General Tuff, Big Blue aka Puff, Boss Hog aka Grumpy, Shroomy aka Major

Tripps, Titian Lion King, Electric Wolf & Lava Rhino, Tyrian Raptor & Psychedelic Phoenix and Crimson Pyramid Rams.

## Other Artwork included.

Mechanical Elephant, Punky Rooster, KOCK.rocks BiPolar Radio, Souvenirs & Memories

## Water Boy aka Puddles

The first drawing was WaterBoy. He was the pose that I was going to use across different eras of time, but after three drawings of the same rhino in the same pose, I had to find more models.

The backgrounds for the individual rhinos didn't get started till all the rhinos and the background scenery were drawn. Then Water Boy was the last of the rhinos to get his background done.

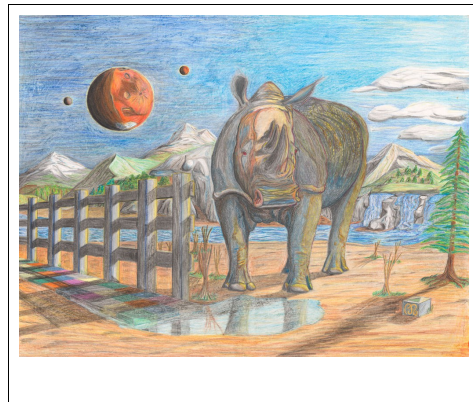
His world is a warm flooded world from global warming (aka Climate Change). This is the first background to have other animals, the koi fish.



## Scaler aka General Tuff

Scaler was the second rhino drawn. He's the first rhino to have three horns. I spent time making little scales all over his body. I want to make him look like he had a tough skin. He's a tree muncher, as seen from the stubs of little trees he has eaten.

Scaler was the first one to get a background. His time-line is early in the epoch. The waterfall hasn't worn down the rocks yet, there appears to be plenty of water and decent conditions for grasses and small trees to grow. The fence, the main sign of civilization, is a basic wooden fence and in good repair. There's snow on the mountain tops and the pliant and moons in the sky are pretty calm.



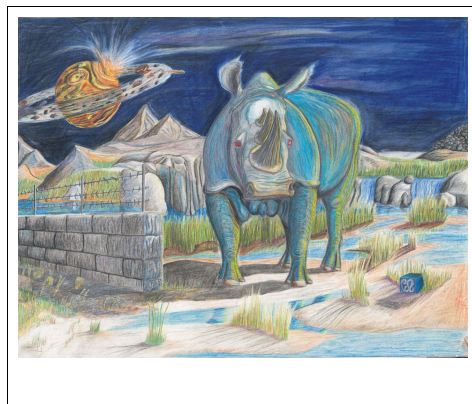
## Big Blue aka Puff

Puff was the third rhino drawn. I ran out of 100 lb paper and grabbed some of the 70 lb paper I had. The amount of work on the paper stretched it to the point that it puffed up when it was laying flat. Thus, "Puff" had to become a 3D piece of art.

After the Background was completed, I started solving the Puff issue. I made some copies of Puff to scale and then glued them to heavier paper. I made multiple individual cut-outs of the full body, the front shoulder forward, the head, and horns. Then I tested the cut-outs under the drawing before I glued them together and then under the image. the drawing got attached to a new 100lb sheet

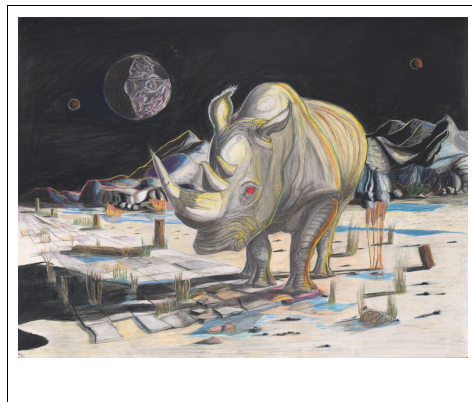
Puff's world was done a little lighter in shades so the rest of the 70 lb paper wouldn't stretch.

Each rhino has it's separate time period with events going on in the world around him. Puff's world is wet, but not flooded. Things are still being cared for, such as the fencing. There is some chaos in the skies with the molten pliant being smacked and debris forming rings.



## Boss Hog aka Grumpy

The fourth rhino to be drawn, Bosshog, was a change from the first pose.



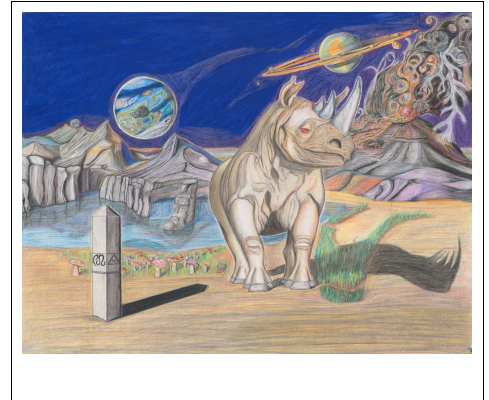
Bosshog has a bummed or grumpy look and a broken horn that's grown back. I wanted an expression of "yea, this is where I live, sigh!"

Bosshogs's world and time-line shows wear and tear. There's a plaint that's undergoing some changes and the walkway has fallen into disrepair. I switched to using pastels for the sky instead of trying to blend colored pencils to the degree I wanted.

## Shroomy aka Major Tripps

Shroomy a.k.a. "Major Tripps," was the fifth rhino drawing. He has that happy, stoned, Content look. Since he was to be the last of the live rhinos, I wanted to make him a dreamer of things.

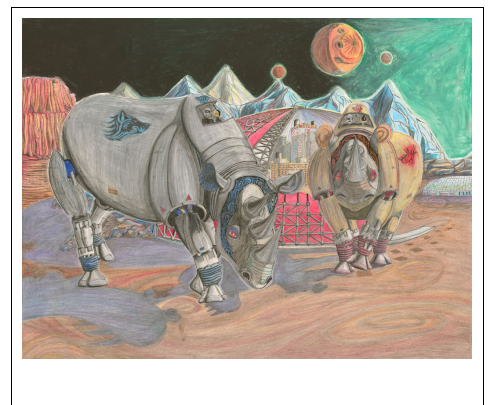
Shroomy's world is one of ideas and imagination, a world with an advanced civilization as noted by the dome structures on the small planet in the sky. The fence is replaced with an Obelisk. With dreaming and enlightenment being the theme, I used the right side and volcano to include some tripping images from Mushroom's mushroom consumption (note the half eaten mushroom on the ground).



## Electric Wolf & Lava Rhino

The first Mechanical Rhino drawing is a pair. It is the first drawing to include people present, the operators of the Rhinos. I also started decorating the armour with tribal and team logo designs.

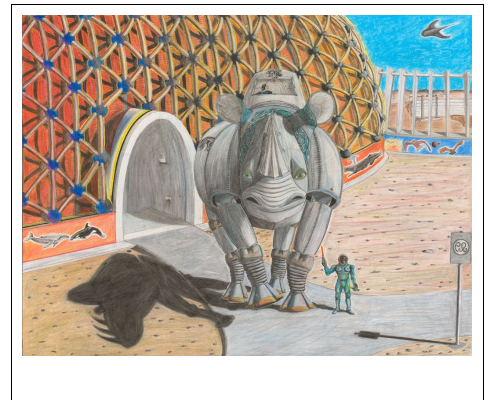
The scenery is early on in the construction of the domes. The first dome, a red one, is half way through construction around a city. A green house also enters the background.



The grounds are clean and prepared for construction, such as swirl marks on the ground. There is a little bit of a sign of rubbish in the background by the volcano.

## Titian Lion King

I redid Lava Rhino into the Titian Lion King for the second Mechanical Rhino. The image is reversed and some slimming done on the body. I added a little more tribal decorations on the rhino. The person directing traffic is an addition of a third person type to the team. There's light reflections from the flares in his hands, but I tried to get a good hint of an Alien inside the suite.



Titian is placed close in front of the Orange Dome so I could show better details of the domes and their construction. The close-up of the dome let me give more detail of the grid structure on the dome that generates a protective energy field for the inhabitants. It also gave me a chance to add memorial murals on the foundation walls of the domes. Here, I included whales and birds.

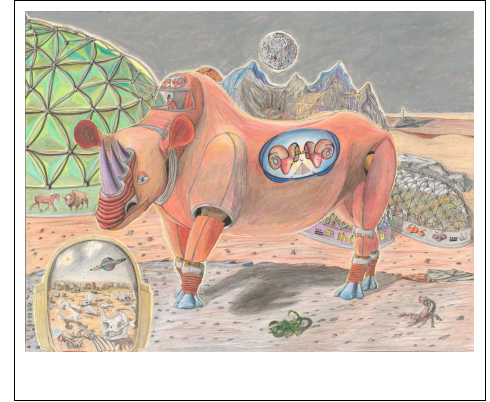
I added some little creatures (scorpions, mice, turtles, bugs) to the ground area along with general rubbish and trash left from a collapsed economy.

## Crimson Pyramid Rams

The third Mechanical Rhino drawing is where I wanted to show what was across the plain and start moving out to new backgrounds and stories. I chose a new rhino pose to do the Crimson Pyramid Rams. The length of the torso gave me more room to make a team logo. So, I made a dual ram's head with pyramid for the logo. Since I wanted to match the two person team with the single Mech Rhino, I decided to add the second person during the background phase of the drawing.

Crimson is placed on the ridge on the right of the Green Dome and green houses. I wanted to show more of the greenhouses and the food production. I also did more of a Geo-dome appearance on the green dome. I added Clydesdale and bison on the green dome. The green houses got decorated with Mayan numbers and inscription as well as murals of the food inside.

The close up of the second person's helmet in the lower left corner provided me with the area to show what is off in the distance behind the drawing's viewer. There are four scorpions in the drawing along with a few rodents and normal amounts of rubbish and trash all over.



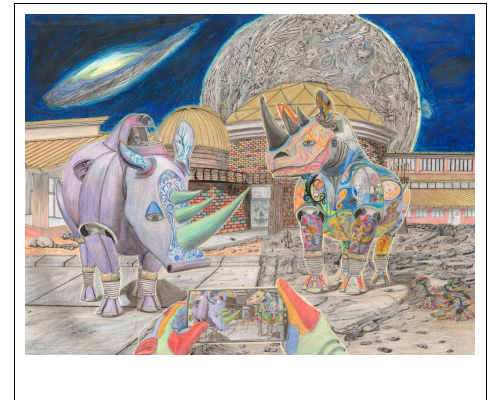
## Tyrian Raptor & Psychedelic Phoenix

This is a pair of Rhinos to balance out the other pair of mechanical. Tyrian is a purple blues color. I had a good idea of the background I wanted, so I made Tyrian fairly simple, just purple and tribals on the ears and nose plate. You may recognize Tyrian as being Bosshog..

Psychedelic Phoenix is a variety of colors and images. You'll recognize Psychedelic Phoenix as being Shroomy/Major Tripps. He is the logical choice to use with a background that is "trippy."

I decided to place one driver in each Rhino and add a th-rid person with the background.

In all the drawings prior to this, the viewer has been a third person tense, in that they are not part of the picture. In this background, the view is in second person tense, in that they are person in the picture taking a picture of the rhinos and scenery.

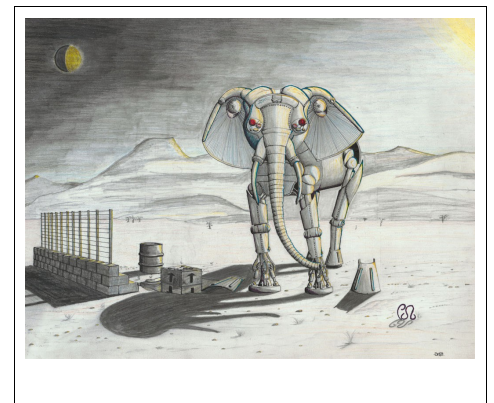


## MECHANICAL ELEPHANT

A mechanical elephant with a driver in the head, stands next to a small fence, barrel and box with a mountain in the background. Front foot plates are removed to see the mechanics.

Artwork Information:

"Mechanical Elephant" is a 2010 mechanical pen and pencil creation. The focus was the Elephant and I also wanted to provide elements for the vanishing point, shadow lines and reflection. The fence provides my vanishing point and shadow, along with the box and barrel. The elephant shadows wasn't done by strict lines from the sun like the fence, box and barrel. It was rendered to basic looks to match the complex form of the elephant.



The Driver can be seen in the head. Presumably one or two other crew members are inside. Some of the feet plates are removed and set aside to expose the workings.

I imagined the ear that are directional and could be could opened up for increased sensitivity. The trunk functions in many fashions like a real elephant for manipulating things, but may also have various sensors. The tusks are an EMF (electro magnetic field) weapon. They are tuned to each other like two dipole antennas, so any EMF field could be aimed to a degree.

## **PUNKY ROOSTER, KOCK.ROCKS BIPOLAR RADIO**

"Punky Rooster, Mascot KOCK.rocks BiPolar Radio" is a 2015 total colored pencil creation.

I've had what I called my bipolar stream up since college days at DeVry Institute of Technology (now a University) in Kansas City, Missouri. I named it KOCK and added as /kockrocks to my personal domain site, <http://thunderchild.net>. Thunderchild dot net was a result from another assignment. It was cheap enough to grabbed a domain, just to take my assignments serious. There just weren't any domains that I wanted to follow with "kock dot ..." existing at that time. It stayed that way for some time until August 6, 2014, when the Domain dot rocks became available.



If you think the music is talking to you,...

just twist up another one and wait for the next message....

## **SOUVENIRS AND MEMORIES**

"Souvenirs and Memories" is a 2010 still-life creation. A total colored pencil on heavy paper.

The subjects are as follows.

The ram's skull is mine and represents me. It's generally hanging in the house with a dream-catcher behind it.

The cat is an urn and contains my last male best buddy, named Scsi (it's a computer interface pronounced Scuzzi).

The rose is a leather hand creation. I taught one of my best friends how to make them and we did a bunch to try and sell. The stem is barbed wire. The leaves have twisted floral wire frame and one shade green leather on one side and a different on the other. The rose petals are leather petal sets of various sizes and shapes.

The Harley Davidson mug is a gift from another best friend. I have a set of large mugs that I use to drink from.

The Lateran is an original Frisco Railroad Brakeman's Lateran. My Dad worked for the Frisco till retirement. He acquired two of these antiques during his time there. One of my Granddads also worked for the railroads. I almost worked for the railroads, but did not. I am a Railroad enthusiast and had a large model train structure as a kid.

The shelving and background are made up and created after all the elements were completed to satisfaction.

